

A Doll's House









A DOLL'S HOUSE  
Henrik Ibsen  
Norwegian  
1879

SET DESIGN

# SET SKETCH

3D rendering attempting to capture overall atmosphere  
and rough placing of major set pieces

# "Trifles" Groundplan



# FLOOR PLAN

2D birds' eye view rendering that sets measurements  
and movement patterns



$$W = 2 \frac{3}{8} \text{ in}$$

$$L = 3 \frac{1}{4} \text{ in}$$

$$\frac{5}{8} \text{ in - stairs}$$

$$\frac{3}{8} \text{ in - door}$$

$$\frac{5}{8} \text{ in} \cdot \frac{3}{12} = \frac{60}{8} = \frac{15}{2} = 11 \frac{1}{2} \rightarrow 7 \frac{1}{2} \text{ (table)} \rightarrow 2 \text{ ft}$$

$$L = \frac{29}{8} \cdot 48^4 = 116 \frac{1}{4} = 29$$

$$W = \frac{37}{16} \cdot 48^3 = 111 \frac{1}{4} = 27 \frac{3}{4}$$

$$\frac{29}{8} \cdot 4 = \frac{29}{2} = 14 \frac{1}{2}$$

$$\frac{37}{16} \cdot 4 = \frac{37}{4} = 9 \frac{1}{4}$$

$$W = 27'9''$$

$$L = 29'11''$$

$$\frac{14}{6} = \frac{7}{3}$$

Stairs =

$$3 \frac{1}{2}$$

$$\frac{14}{3} = 4 \frac{2}{3}$$

$$3 \frac{1}{2} \text{ in}$$

$$2 \frac{3}{4} \text{ in}$$

$$L = 3 \frac{5}{8}''$$

$$W = 2 \frac{5}{16}''$$

$$L = \frac{29}{8}$$

$$W = \frac{37}{16}$$

$$\frac{1}{4} = \frac{12}{1} = \frac{3}{1}$$

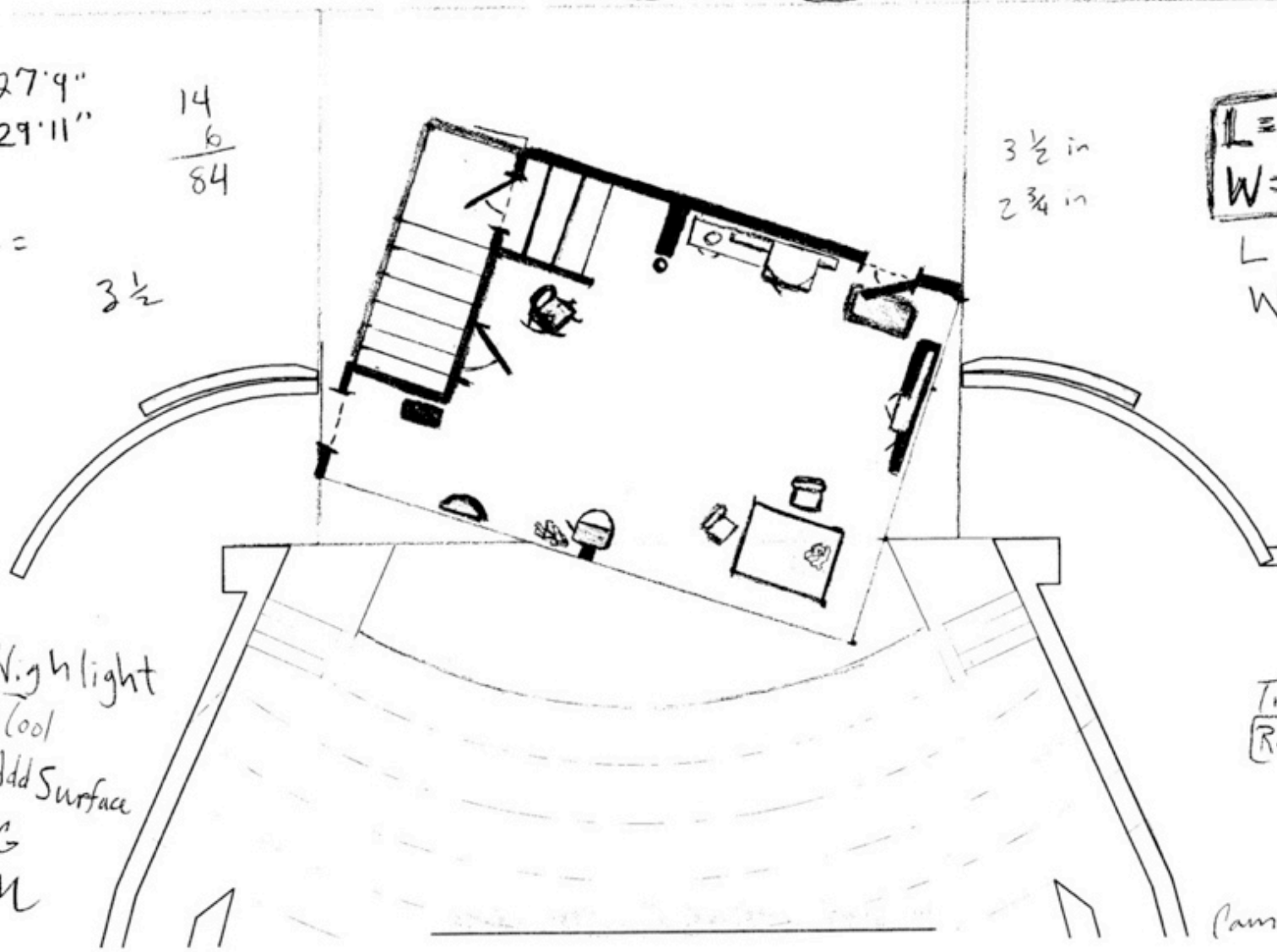
$$\frac{1}{4}'' = 1'-0''$$

$$\frac{1}{4}'' = \frac{12}{1}'' = 12''$$

Trifles  
[Revision]

\*Highlight  
Tool  
Add Surface  
Control G  
Control H

Cam Roberts

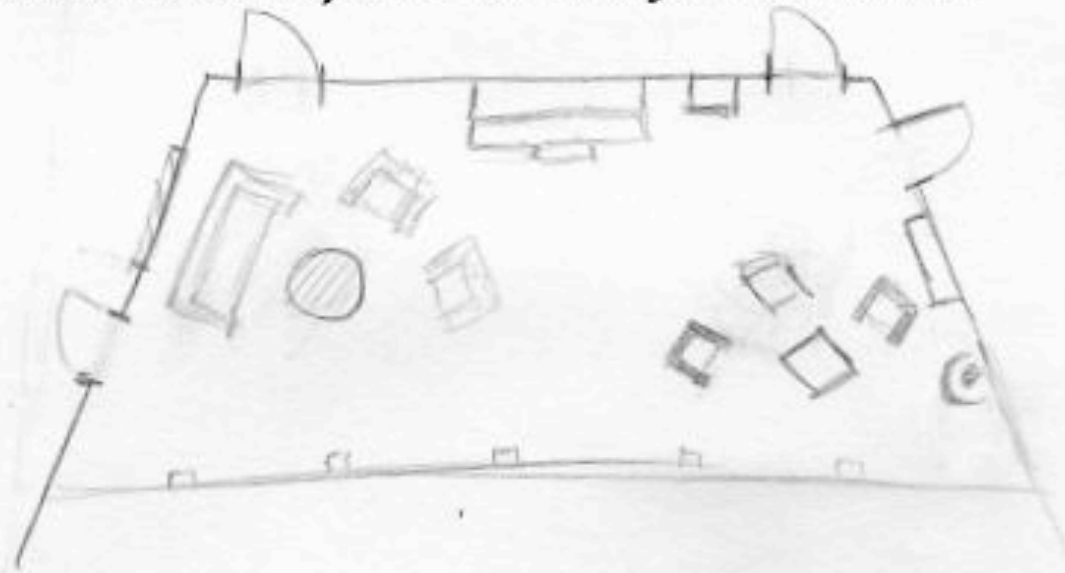


A room furnished comfortably and tastefully, but not extravagantly. At the back, a door to the right leads to the entrance-hall, another to the left leads to Helmer's study. Between the doors stands a piano. In the middle of the left-hand wall is a door, and beyond it a window. Near the window are a round table, arm-chairs and a small sofa. In the right-hand wall, at the farther end, another door; and on the same side, nearer the footlights, a stove, two easy chairs and a rocking chair; between the stove and the door, a small table. Engravings on the walls; a cabinet with china and other small objects; a small book-case with well-bound books. The floors are carpeted, and a fire burns in the stove. It is winter.

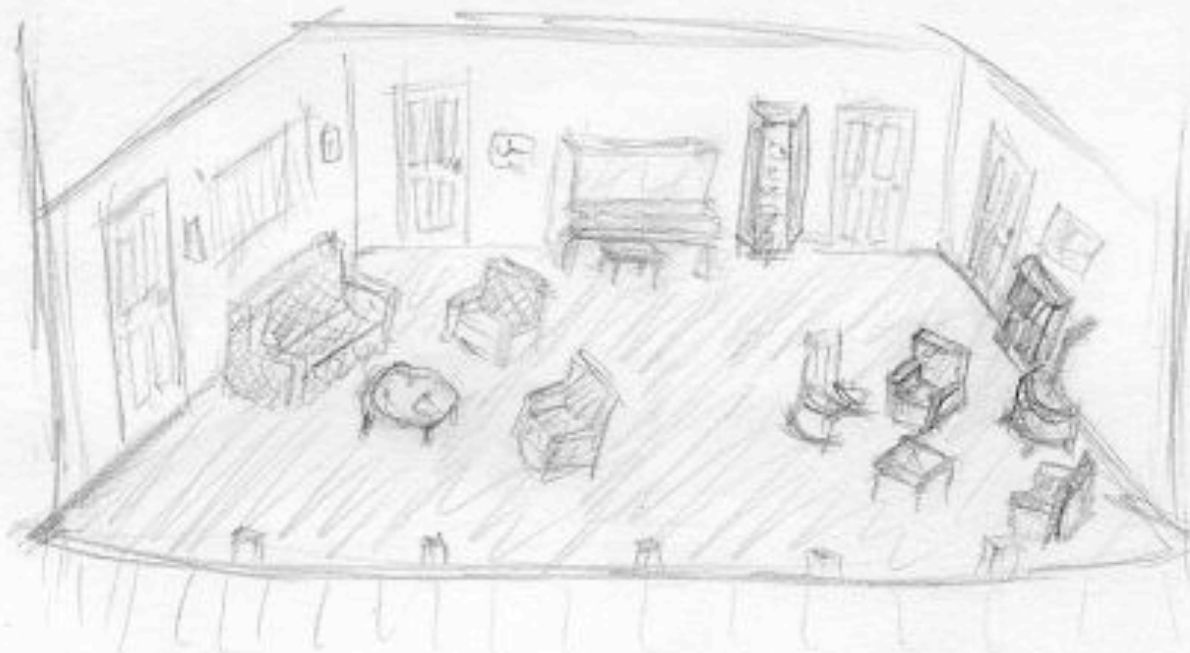
"Remove everything that has no relevance to the story. If you say in the first chapter that there is a rifle hanging on the wall, in the second or third chapter it absolutely must go off. If it's not going to be fired, it shouldn't be hanging there."

Anton Chekhov

*Blocked set, based upon Ibsen's original directions.*



*Sketch of blocked set*



living in a  
doll's house?













# ***A Doll's House Vocabulary***

**frivolous** (adj) - lacking in seriousness or importance

**dissemble** (verb) - to disguise one's true feelings or motives

**fraudulent** (adj) - deceitful; portrayed as genuine but is really an impostor

**prevaricate** (verb) - to be deliberately ambiguous or unclear in order to mislead or withhold information

**imprudent** (adj) - not showing care for the consequences of an action; rash

**scrupulous** (adj) - very principled, careful, conscientious

**jeopardize** (verb) - to expose to danger

**degenerate** (verb/adj/noun) - decline or deteriorate physically, mentally, or morally; having lost the physical, mental, or moral qualities considered normal and desirable; an immoral or corrupt person

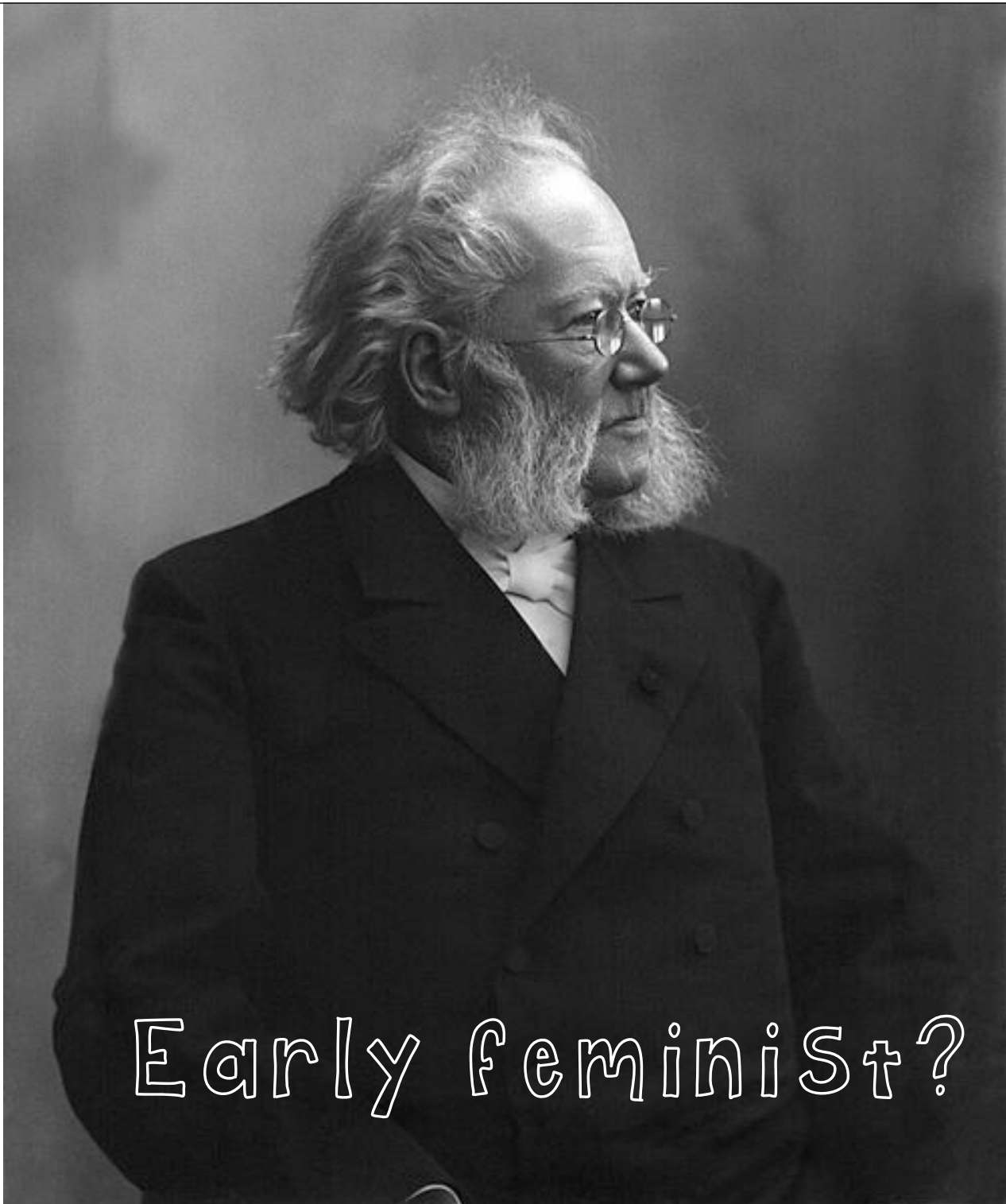
**inexorable** (adj) - impossible to stop or prevent

**vehement** (adj) - forcefully expressing emotion or conviction; passionate or intense

**stifled** (adj) - held in check with difficulty

**perplex** (verb) - to be completely baffled or confused by an unaccountable cause





Early feminist?

# FEMINIST

# HUMANIST

## To the Norwegian Women's Rights League Henrik Ibsen, 1898

I am not a member of the Women's Rights League. Whatever I have written has been without any conscious thought of making propaganda. I have been more poet and less social philosopher than people generally seem inclined to believe. I thank you for the toast, but must disclaim the honor of having consciously worked for the women's rights movement. I am not even quite clear as to just what this women's rights movement really is. To me it has seemed a problem of humanity in general. And if you read my books carefully you will understand this. True enough, it is desirable to solve the problem of women's rights, along with all the others; but that has not been the whole purpose. My task has been the description of humanity.

# A Doll's House

## Alternative Ending - 1900

During a 1900 German production of the play, the actress playing Nora refused to play the “unsatisfactory, repellent” ending. The producer wrote Ibsen, requesting him to prove an alternative ending.

HELMER: Then go! (*Seizes her arm.*) But first you shall see your children for the last time!

NORA: Let me go! I will not see them! I cannot do it!

HELMER: (*Pulls her toward the door to the left*) You shall see them! (*Opens the door and says softly*) See, there they are sleeping calmly and without care. Tomorrow when they wake and call for their mother they will be motherless.

NORA: (*Struggles inwardly. Lets her traveling bag fall, and says*) Oh, I am sinning against myself. But I cannot desert them. (*Sinks half upon her knees before the door.*)

HELMER: (*Joyfully, but low*) Nora!

(*Curtain*)